

Q 1 2 1 X 6 1 M O N O S T O N E

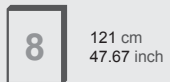
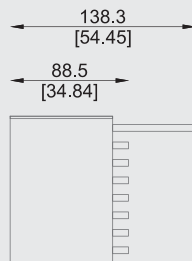
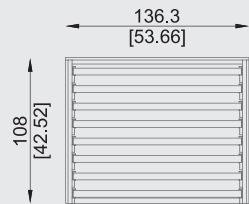
Espositore monofacciale composto di 8 telai per allestire 8 pannelli 61x121x1cm. Completo di rivestimento nobilitato. Struttura da fissare a terra o a parete.

One faced display unit with 8 frames to set up 8 panels 61x121x1 cm. With melamine coated side panel. The structure must be fixed to the wall or to the floor.

Einseitig ausziehbarer Musterschrank bestehend aus 8 Rahmen zur Aufnahme von 8 Tafeln 61x121x1 cm. Komplett mit beschichteter Verkleidung. Befestigung am Boden oder ander Wand erforderlich.

Meuble à tiroirs mono faces composé de 8 tiroirs pour exposer 8 panneaux 61x121x1 cm. Avec revêtement mélaminé. La structure doit être fixée au sol ou au mur.

Expositor de metal, compuesto por 8 bastidores para exponer 8 paneles 61x121x1 cm. Rivestimiento de madera melamina. El expositor debe ser fijo al piso o al muro.



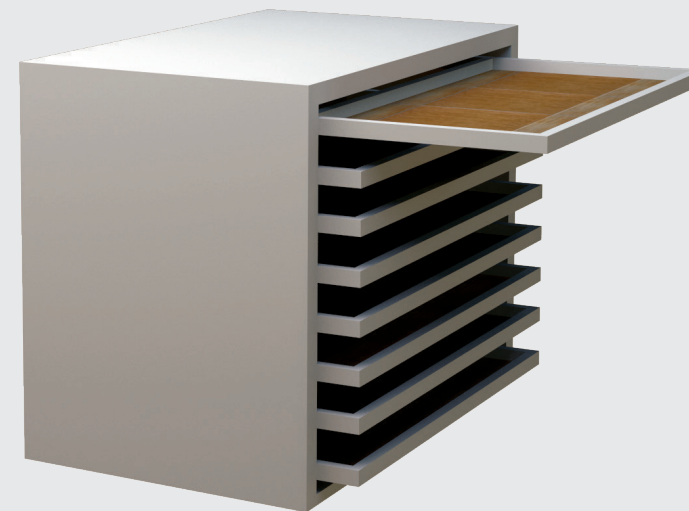
121 cm
47.67 inch

61 cm
24.03 inch



A = 140 cm / 55.16 inch
B = 100 cm / 39.40 inch
C = 130 cm / 51.22 inch

200 kg



STONE

159M

STONE

DOORS

FINITURE